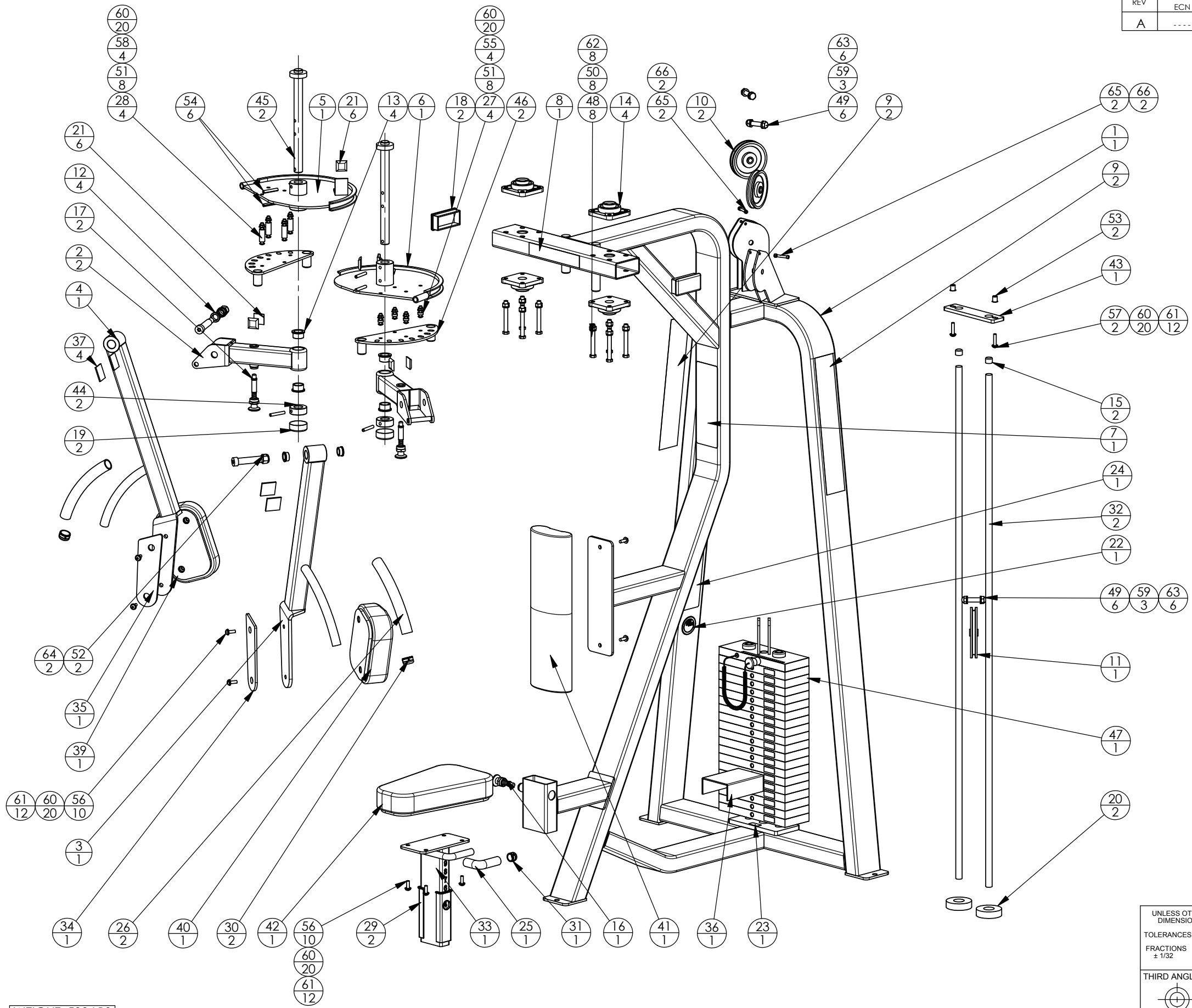


| REVISIONS | | | | |
|-----------|-------|---------------------------------|--------------|---------|
| REV | ECN # | DESCRIPTION | REV. BY/DATE | APR. BY |
| A | ----- | REDRAWN & UPDATED IN SOLIDWORKS | 06/1999 | |



| ITEM NO. | QTY. | PART NO. | DESCRIPTION |
|----------|------|--------------------|--|
| 1 | 1 | 405-505-SA-1 | 405 & 505 MAIN FRAME ASSY |
| 2 | 2 | 405-SA-1 | 405 UPPER ARM ASSY |
| 3 | 1 | 405-SA-2 | 405 LEFT ARM ASSY |
| 4 | 1 | 405-SA-3 | 405 RIGHT ARM ASSY |
| 5 | 1 | 405-SA-4 | 405 RIGHT CAM ASSY |
| 6 | 1 | 405-SA-5 | 405 LEFT CAM ASSY |
| 7 | 1 | AC0405B | LABEL, INSTRUCTION, "INCLINE PEC DECK 405" |
| 8 | 1 | AC1001 | LABEL, "ICARIAN", 1 1/2 x 8 1/8 |
| 9 | 2 | AC1002 | LABEL, "ICARIAN", 3 1/2 x 21 1/2 |
| 10 | 2 | AC1009 | PULLEY, 4 1/2" DIA x 1/2" ID |
| 11 | 1 | AC1010 | PULLEY, 6" DIA x 1/2" ID |
| 12 | 4 | AC1020 | BUSHING, BRONZE, 0.755" ID x 1" OD |
| 13 | 4 | AC1021 | BUSHING, BRONZE, 1.005" ID x 1 1/4" OD |
| 14 | 4 | AC1025 | PILLOW BLOCK FLANGE, 4 BOLT |
| 15 | 2 | AC1040 | CAP, GUIDE ROD, DIA. 3/4 |
| 16 | 1 | AC1051-MS | SNAP PIN, SMALL M-PULL |
| 17 | 2 | AC1051-LONG-MS | SNAP PIN, LONG, SMALL M-PULL |
| 18 | 2 | AC1057 | CAP, BLACK PLASTIC, 2 x 4 |
| 19 | 2 | AC1102 | CAP, DIP MOLDED, DIA. 2 |
| 20 | 2 | AC1148 | WEIGHT STACK BUMPER |
| 21 | 6 | AC1149 | RUBBER BUMPER, 1 1/4 SQ. |
| 22 | 1 | AC1161 | LABEL, ROUND, "MADE IN USA" |
| 23 | 1 | AC1164 | LABEL, F.P.I. SERIAL NUMBER |
| 24 | 1 | AC1183 | LABEL, "WARNING, SERIOUS INJURY..." |
| 25 | 1 | AC1225-6 | RUBBERGRIP, DIA 3/4 x (5) |
| 26 | 2 | AC1226-12 | RUBBERGRIP, DIA 1 x (10) |
| 27 | 4 | AC1228 | SPACER, ALU, 21/64 ID x 5/8 OD x (1/4) |
| 28 | 4 | AC1229 | SPACER, ALU, 21/64 ID x 5/8 OD x (1 1/2) |
| 29 | 2 | AC1236-H | PLASTIC GLIDE WITH HOLE |
| 30 | 2 | AC218 | HANDLE END CAP W/SET SCREWS, DIA 1" |
| 31 | 1 | AC220 | HANDLE END CAP W/SET SCREWS, DIA 3/4" |
| 32 | 2 | CH1216 | STEEL BAR RND, DIA. 3/4" x (62 5/8), #6 |
| 33 | 1 | CH4000 | SEAT SUPPORT ASSY, 9 HOLE |
| 34 | 1 | CP1044 (L) | CUT PIECE, CREPE, 1/4 x 3 x 9 1/4, 2 HOLES (L) |
| 35 | 1 | CP1044 (R) | CUT PIECE, CREPE, 1/4 x 3 x 9 1/4, 2 HOLES (R) |
| 36 | 1 | CP1081 | CUT PIECE, ABS CHANNEL, 1/8 x 2 x 4 1/4 x (6) |
| 37 | 4 | CP1121 | ABS BLACK, 1/8 x 1 3/4 x 1 3/4 |
| 38 | 1 | HH-405-505-176-000 | CABLE ASSY, HH-405-505-147-000 |
| 39 | 1 | PD1122-LEFT | PAD, 6 x 9, 2 HOLES, LEFT, ANGLED FACE |
| 40 | 1 | PD1122-RIGHT | PAD, 6 x 9, 2 HOLES, RIGHT, ANGLED FACE |
| 41 | 1 | PD1141 | PAD, 4 x 19, 2 HOLES |
| 42 | 1 | PD1207 | PAD, SEAT, 9 x 5 x (14 1/2), 4 HOLES |
| 43 | 1 | PF1015 | STEEL BAR FLAT CR/HR, 3/8 x 2 x (8 1/4), 2 HOLES 2 SLOTS |
| 44 | 2 | PF1256 | STEEL TUBE RND DOM 2 OD x 1 ID x (3/4), 1 HOLE |
| 45 | 2 | SA1612 | CAM SHAFT PIVOT ASSY. |
| 46 | 2 | SA2052 | CAM SELECTOR ASSY. |
| 47 | 1 | WS2003 | WEIGHT STACK, 20 PLATE, 200 LBS. |
| 48 | 8 | FA1008 | BOLT, HEX HEAD, BLK, 7/16-14 x 3 3/4 |
| 49 | 6 | FA1035 | NUT, HEX, ACORN, 1/2-13 |
| 50 | 8 | FA1039 | NUT, HEX, 7/16-14 |
| 51 | 8 | FA1042 | NUT, HEX, LOW PROFILE, NYLOCK, 5/16-18 |
| 52 | 2 | FA1045 | NUT, HEX, NYLOCK, 5/8-11 |
| 53 | 2 | FA1055 | NUT, INSERT, 5/16-18 |
| 54 | 6 | FA1065 | PIN, SPRING, DIA. 5/16 x 2 |
| 55 | 4 | FA1070 | BOLT, BUTTON HEAD, 5/16-18 x 1 1/4 |
| 56 | 10 | FA1071 | BOLT, BUTTON HEAD, 5/16-18 x 1 |
| 57 | 2 | FA1072 | BOLT, BUTTON HEAD, 5/16-18 x 1 1/2 |
| 58 | 4 | FA1080 | BOLT, BUTTON HEAD, 5/16-18 x 2 1/2 |
| 59 | 3 | FA1101 | STUD, 1/2-13 x 2 1/2 |
| 60 | 20 | FA1106 | WASHER, FLAT, 5/16 ID x 11/16 OD |
| 61 | 12 | FA1116 | WASHER, SPLIT, 5/16 ID |
| 62 | 8 | FA1118 | WASHER, SPLIT, 7/16 ID |
| 63 | 6 | FA1119 | WASHER, SPLIT, 1/2 ID |
| 64 | 2 | FA1139 | BOLT, SHOULDER, 5/8-11 x 3/4 x 3 |
| 65 | 2 | FA1140 | BOLT, SHOULDER, 10-24 x 1/4 x 1 1/4 |
| 66 | 2 | FA1141 | NUT, HEX, NYLOCK, 10-24 |

WEIGHT: 500 LBS.

UNLESS OTHERWISE SPECIFIED DIMENSIONS ARE IN INCHES
 TOLERANCES ARE:
 FRACTIONS ± 1/32 DECIMALS .XX ± .01 ANGLES ± 1°
 .XXX ± .005

THIRD ANGLE PROJECTION

DO NOT SCALE DRAWING

FITNESS PRODUCTS INTERNATIONAL
 ICARIAN FLITE ABENCH JADE STRETCH CENTER
 12660 BRANFORD ST. SUN VALLEY, CA. 91352

| | | | |
|-----------------|-------|-------------------|--------------|
| APPROVALS | DATE | TITLE | SCALE |
| DESIGNED BY RSG | 02/99 | VERTICAL PEC DECK | 1:12 |
| MODELED BY RSG | 02/99 | | SHEET 1 OF 1 |
| DRAWN BY RSG | 06/99 | SIZE B | REV A |
| APPROVED BY | | DWG NO. 405-EXP | |

405 Vertical Pec Deck

| Part Number | Description | Bubble Number |
|--------------------|------------------------------------|----------------------|
| CW405SA6-211 | ASSY,MAIN FRAME,405,SKY WHITE | 1.01 |
| CW405SA6-212 | ASSY,MAIN FRAME,405,SKY WHITE | 1.01 |
| CW405SA6-221 | ASSY,MAIN FRAME,405,BLACK | 1.02 |
| CW405SA6-222 | ASSY,MAIN FRAME,405,BLACK | 1.02 |
| CW405SA6-231 | ASSY,MAIN FRAME,405,RED | 1.03 |
| CW405SA6-241 | ASSY,MAIN FRAME,405,PLATINUM SPRKL | 1.04 |
| CW405SA6-251 | ASSY,MAIN FRAME,405,SILVER | 1.05 |
| CW405SA6-261 | ASSY,MAIN FRAME,405,BLUE | 1.06 |
| CW405SA6-271 | ASSY,MAIN FRAME,405,CHARCOAL | 1.07 |
| CW405SA6-281 | ASSY,MAIN FRAME,405,CATHEDRAL GREY | 1.08 |
| CW405SA6-291 | ASSY,MAIN FRAME,405,SILVER VIEN | 1.09 |
| CW405SA6-311 | ASSY,MAIN FRAME,405,STONE HG | 1.11 |
| CW405SA6-312 | ASSY,MAIN FRAME,405,STONE HG | 1.11 |
| CW405SA6-321 | ASSY,MAIN FRAME,405, TITANIUM HG | 1.12 |
| CW405SA6-322 | ASSY,MAIN FRAME,405, TITANIUM HG | 1.12 |
| CW405SA6-331 | ASSY,MAIN FRAME,405, WHITE GLOSS | 1.13 |
| CW405SA6-341 | ASSY,MAIN FRAME,405, BLACK ONYX | 1.14 |
| CW405SA6-351 | ASSY,MAIN FRAME,405, LIGHT BRONZE | 1.15 |
| CW405SA6-352 | ASSY,MAIN FRAME,405, LIGHT BRONZE | 1.15 |
| CW405SA6-361 | ASSY,MAIN FRAME,405, SAPPHIRE BLUE | 1.16 |
| CW405SA6-362 | ASSY,MAIN FRAME,405, SAPPHIRE BLUE | 1.16 |
| CW405SA1-211 | ASSY,ARM,UPPER,405,SKY WHITE | 2.01 |
| CW405SA1-221 | ASSY,ARM,UPPER,405,BLACK | 2.02 |
| CW405SA1-231 | ASSY,ARM,UPPER,405,RED | 2.03 |
| CW405SA1-241 | ASSY,ARM,UPPER,405,PLAT SPKLE | 2.04 |
| CW405SA1-251 | ASSY,ARM,UPPER,405,SILVER | 2.05 |
| CW405SA1-261 | ASSY,ARM,UPPER,405,BLUE | 2.06 |
| CW405SA1-271 | ASSY,ARM,UPPER,405,CHARCOAL | 2.07 |
| CW405SA1-281 | ASSY,ARM,UPPER,405,CATH GRY | 2.08 |
| CW405SA1-291 | ASSY,ARM,UPPER,405,SILVER VIEN | 2.09 |
| CW405SA1-311 | ASSY,ARM,UPPER,405,STONE HG | 2.11 |
| CW405SA1-321 | ASSY,ARM,UPPER,405,TITANIUM HG | 2.12 |
| CW405SA1-331 | ASSY,ARM,UPPER,405,WHITE GLOSS | 2.13 |
| CW405SA1-341 | ASSY,ARM,UPPER,405,BLACK ONYX | 2.14 |
| CW405SA1-351 | ASSY,ARM,UPPER,405,LIGHT BRONZE | 2.15 |
| CW405SA1-361 | ASSY,ARM,UPPER,405,SAPPHIRE BLUE | 2.16 |
| CW405SA2-211 | ASSY,ARM,LEFT,405,SKY WHITE | 3.01 |
| CW405SA2-221 | ASSY,ARM,LEFT,405,BLACK | 3.02 |
| CW405SA2-231 | ASSY,ARM,LEFT,405,RED | 3.03 |
| CW405SA2-241 | ASSY,ARM,LEFT,405,PLAT SPKLE | 3.04 |
| CW405SA2-251 | ASSY,ARM,LEFT,405,SILVER | 3.05 |
| CW405SA2-261 | ASSY,ARM,LEFT,405,BLUE | 3.06 |
| CW405SA2-271 | ASSY,ARM,LEFT,405,CHARCOAL | 3.07 |
| CW405SA2-281 | ASSY,ARM,LEFT,405,CATH GRY | 3.08 |
| CW405SA2-291 | ASSY,ARM,LEFT,405,SILVER VIEN | 3.09 |
| CW405SA2-311 | ASSY,ARM,LEFT,405,STONE HG | 3.11 |
| CW405SA2-321 | ASSY,ARM,LEFT,405,TITANIUM HG | 3.12 |
| CW405SA2-331 | ASSY,ARM,LEFT,405,WHITE GLOSS | 3.13 |
| CW405SA2-341 | ASSY,ARM,LEFT,405,BLACK ONYX | 3.14 |

| | | |
|--------------|-------------------------------------|------|
| CW405SA2-351 | ASSY,ARM,LEFT,405,LIGHT BRONZE | 3.15 |
| CW405SA2-361 | ASSY,ARM,LEFT,405,SAPPHIRE BLUE | 3.16 |
| CW405SA3-211 | ASSY,ARM,RIGHT,405,SKY WHITE | 4.01 |
| CW405SA3-221 | ASSY,ARM,RIGHT,405,BLACK | 4.02 |
| CW405SA3-231 | ASSY,ARM,RIGHT,405,RED | 4.03 |
| CW405SA3-251 | ASSY,ARM,RIGHT,405,SILVER | 4.05 |
| CW405SA3-261 | ASSY,ARM,RIGHT,405,BLUE | 4.06 |
| CW405SA3-271 | ASSY,ARM,RIGHT,405,CHARCOAL | 4.07 |
| CW405SA3-281 | ASSY,ARM,RIGHT,405,CATH GRY | 4.08 |
| CW405SA3-291 | ASSY,ARM,RIGHT,405,SILVER VIEN | 4.09 |
| CW405SA3-311 | ASSY,ARM,RIGHT,405,STONE HG | 4.11 |
| CW405SA3-321 | ASSY,ARM,RIGHT,405,TITANIUM HG | 4.12 |
| CW405SA3-331 | ASSY,ARM,RIGHT,405,WHITE GLOSS | 4.13 |
| CW405SA3-341 | ASSY,ARM,RIGHT,405,BLACK ONYX | 4.14 |
| CW405SA3-351 | ASSY,ARM,RIGHT,405,LIGHT BRONZE | 4.15 |
| CW405SA3-361 | ASSY,ARM,RIGHT,405,SAPPHIRE BLUE | 4.16 |
| CW405SA4-211 | ASSY,RIGHT CAM,405,SKY WHITE | 5.01 |
| CW405SA4-221 | ASSY,RIGHT CAM,405,BLACK | 5.02 |
| CW405SA4-231 | ASSY,RIGHT CAM,405,RED | 5.03 |
| CW405SA4-241 | ASSY,RIGHT CAM,405,PLATINUM SPRKL | 5.04 |
| CW405SA4-251 | ASSY,RIGHT CAM,405,SILVER | 5.05 |
| CW405SA4-261 | ASSY,RIGHT CAM,405,BLUE | 5.06 |
| CW405SA4-271 | ASSY,RIGHT CAM,405,CHARCOAL | 5.07 |
| CW405SA4-281 | ASSY,RIGHT CAM,405,CATHEDRAL GREY | 5.08 |
| CW405SA4-291 | ASSY,RIGHT CAM,405,SILVER VIEN | 5.09 |
| CW405SA4-311 | ASSY,RIGHT CAM,405,STONE HG | 5.11 |
| CW405SA4-321 | ASSY,RIGHT CAM,405,TITANIUM HG | 5.12 |
| CW405SA4-331 | ASSY,RIGHT CAM,405,WHITE GLOSS | 5.13 |
| CW405SA4-341 | ASSY,RIGHT CAM,405,BLACK ONYX | 5.14 |
| CW405SA4-351 | ASSY,RIGHT CAM,405,LIGHT BRONZE | 5.15 |
| CW405SA4-361 | ASSY,RIGHT CAM,405,SAPPHIRE BLUE | 5.16 |
| CW405SA5-211 | ASSY,LEFT CAM,405,SKY WHITE | 6.01 |
| CW405SA5-221 | ASSY,LEFT CAM,405,BLACK | 6.02 |
| CW405SA5-231 | ASSY,LEFT CAM,405,RED | 6.03 |
| CW405SA5-241 | ASSY,LEFT CAM,405,PLATINUM SPRKL | 6.04 |
| CW405SA5-251 | ASSY,LEFT CAM,405,SILVER | 6.05 |
| CW405SA5-261 | ASSY,LEFT CAM,405,BLUE | 6.06 |
| CW405SA5-271 | ASSY,LEFT CAM,405,CHARCOAL | 6.07 |
| CW405SA5-281 | ASSY,LEFT CAM,405,CATHEDRAL GREY | 6.08 |
| CW405SA5-291 | ASSY,LEFT CAM,405,SILVER VIEN | 6.09 |
| CW405SA5-311 | ASSY,LEFT CAM,405,STONE HG | 6.11 |
| CW405SA5-321 | ASSY,LEFT CAM,405,TITANIUM HG | 6.12 |
| CW405SA5-331 | ASSY,LEFT CAM,405,WHITE GLOSS | 6.13 |
| CW405SA5-341 | ASSY,LEFT CAM,405,BLACK ONYX | 6.14 |
| CW405SA5-351 | ASSY,LEFT CAM,405,LIGHT BRONZE | 6.15 |
| CW405SA5-361 | ASSY,LEFT CAM,405,SAPPHIRE BLUE | 6.16 |
| CWAC1009-101 | PULLEY, 4 1/2 DIA. X 1/2 ID | 10 |
| CWAC1010-101 | PULLEY, 6 DIA X 1/2 ID | 11 |
| CW10043-133 | BUSHING, BRONZE, 3/4" ID X 1" OD | 12 |
| CW10043-134 | BUSHING, BRONZE, 1" ID X 1 1/4" OD | 13 |
| CW12405-101 | PILLOW BLOCK, BEARING, FLANGE, 4 BO | 14 |

| | | |
|----------------|-------------------------------------|-------|
| CW12404-101 | CAP, GUIDE ROD,DIA 3/4, BLK | 15 |
| CW32460-321 | ASSY, RATCHETING LEVER, TITANIUM | 16 |
| CW30501-751 | ASSY, POP PIN, 0.450 DIA HANDLE, BL | 17 |
| CW11311-102 | ENDCAP, REC TUBE, 2X4, BLK PLASTIC | 18 |
| CW10514-102 | CAP, VINYL DIP MOLDED, DIA 2.00 | 19 |
| CW12402-101 | BUMPER, WEIGHT STACK, BLK RUBBER | 20 |
| CW12575-101 | MOULDED BUMPON, BLACK, 31.75MM SQ (| 21 |
| CWGR2610-000 | GRIP,RUBBER, 1" DIA, 10" | 26 |
| CWAC1228-901 | SPACER, ALU,.328 ID X .625 OD X .25 | 27 |
| CWAC1229-901 | SPACER, ALU,.328 ID X .625 OD X 1.5 | 28 |
| CWAC218-901 | HANDLE END CAP W/SET SCREWS, DIA 1" | 30 |
| CWPF1216-711 | GUIDE ROD,3/4 X (62 5/8), (#6), CHM | 32 |
| CW30181-711 | ASSY,SEAT SUPPORT,9 HOLE,CHM | 33 |
| CW32535-711 | ASSEMBLY, SEAT ADJUSTMENT, 8 HOLE, | 33 |
| CWCP1044-101 | CUT PIECE, CREPE, 1/4 X 3 X 9 1/4, | 34 |
| CWCP1044-102 | CUT PIECE, CREPE, 1/4 X 3 X 9 1/4, | 35 |
| CW30012-103 | CUT PIECE, ABS BLACK, 1/8 X 1 3/4 X | 37 |
| CWCP8106-000 | CP, ABS CHANNEL, 1/8 X 2 X 4 X 6 | 37 |
| CWCLHH178-500 | ASSY, CABLE, 405, 505 | 38 |
| CWPD1122LB-101 | PAD,6X9,2HLS,LEFT,W/BP,BLACK | 39.01 |
| CWPD1122LB-102 | PAD,6X9,2HLS,LEFT,W/BP,RYL BL | 39.02 |
| CWPD1122LB-103 | PAD,6X9,2HLS,LEFT,W/BP,DVE GRY | 39.03 |
| CWPD1122LB-104 | PAD,6X9,2HLS,LEFT,W/BP,CROCUS | 39.04 |
| CWPD1122LB-105 | PAD,6X9,2HLS,LEFT,W/BP,GROTTO | 39.05 |
| CWPD1122LB-106 | PAD,6X9,2HLS,LEFT,W/BP,GRAPHITE | 39.06 |
| CWPD1122LB-107 | PAD,6X9,2HLS,LEFT,W/BP,RED | 39.07 |
| CWPD1122LB-108 | PAD,6X9,2HLS,LEFT,W/BP,CHN GRN | 39.08 |
| CWPD1122LB-109 | PAD,6X9,2HLS,LEFT,W/BP,TURQSE | 39.09 |
| CWPD1122LB-110 | PAD,6X9,2HLS,LEFT,W/BP,RASP | 39.1 |
| CWPD1122LB-111 | PAD,6X9,2HLS,LEFT,W/BP,PLUM | 39.11 |
| CWPD1122LB-112 | PAD,6X9,2HLS,LEFT,W/BP,REGIMENT | 39.12 |
| CWPD1122LB-113 | PAD,6X9,2HLS,LEFT,W/BP,SPC BLUE | 39.13 |
| CWPD1122LB-115 | PAD,6X9,2HLS,LEFT,W/BP,BLK LTHR | 39.15 |
| CWPD1122LB-116 | PAD,6X9,2HLS,LEFT,W/BP,NVBL LTH | 39.16 |
| CWPD1122LB-117 | PAD,6X9,2HLS,LEFT,W/BP,PUTTY | 39.17 |
| CWPD1122LB-118 | PAD,6X9,2HLS,LEFT,W/BP,IMPRL BL | 39.18 |
| CWPD1122LB-119 | PAD,6X9,2HLS,LEFT,W/BP,YEW GRN | 39.19 |
| CWPD1122LB-120 | PAD,6X9,2HLS,LEFT,W/BP,DSTY JD | 39.2 |
| CWPD1122LB-121 | PAD,6X9,2HLS,LEFT,W/BP,TER COT | 39.21 |
| CWPD1122LB-122 | PAD,6X9,2HLS,LEFT,W/BP,PAPRIKA | 39.22 |
| CWPD1122LB-123 | PAD,6X9,2HLS,LEFT,W/BP,ASH LTHR | 39.23 |
| CWPD1122LB-124 | PAD,6X9,2HLS,LEFT,W/BP,CERULEAN LTH | 39.24 |
| CWPD1122LB-125 | PAD,6X9,2HLS,LEFT,W/BP,CHARCOAL LTH | 39.25 |
| CWPD1122LB-127 | PAD,6X9,2HLS,LEFT,W/BP,MOSS LTHR | 39.27 |
| CWPD1122LB-128 | PAD,6X9,2HLS,LEFT,W/BP,SPICE LTHR | 39.28 |
| CWPD1122LB-129 | PAD,6X9,2HLS,LEFT,W/BP,TOMATO LTHR | 39.29 |
| CWPD1122RB-101 | PAD,6X9,2HLS,RIGHT,W/BP,BLACK | 40.01 |
| CWPD1122RB-102 | PAD,6X9,2HLS,RIGHT,W/BP,RYL BL | 40.02 |
| CWPD1122RB-103 | PAD,6X9,2HLS,RIGHT,W/BP,DVE GRY | 40.03 |
| CWPD1122RB-104 | PAD,6X9,2HLS,RIGHT,W/BP,CROCUS | 40.04 |
| CWPD1122RB-105 | PAD,6X9,2HLS,RIGHT,W/BP,GROTTO | 40.05 |

| | | |
|----------------|-------------------------------------|-------|
| CWPD1122RB-106 | PAD,6X9,2HLS,RIGHT,W/BP,GRAPHITE | 40.06 |
| CWPD1122RB-107 | PAD,6X9,2HLS,RIGHT,W/BP,RED | 40.07 |
| CWPD1122RB-108 | PAD,6X9,2HLS,RIGHT,W/BP,CHN GRN | 40.08 |
| CWPD1122RB-109 | PAD,6X9,2HLS,RIGHT,W/BP,TURQSE | 40.09 |
| CWPD1122RB-110 | PAD,6X9,2HLS,RIGHT,W/BP,RASP | 40.1 |
| CWPD1122RB-111 | PAD,6X9,2HLS,RIGHT,W/BP,PLUM | 40.11 |
| CWPD1122RB-112 | PAD,6X9,2HLS,RIGHT,W/BP,REGIMENT | 40.12 |
| CWPD1122RB-113 | PAD,6X9,2HLS,RIGHT,W/BP,SPC BLUE | 40.13 |
| CWPD1122RB-115 | PAD,6X9,2HLS,RIGHT,W/BP,BLK LTHR | 40.15 |
| CWPD1122RB-116 | PAD,6X9,2HLS,RIGHT,W/BP,NVBL LTH | 40.16 |
| CWPD1122RB-117 | PAD,6X9,2HLS,RIGHT,W/BP,PUTTY | 40.17 |
| CWPD1122RB-118 | PAD,6X9,2HLS,RIGHT,W/BP,IMPRL BL | 40.18 |
| CWPD1122RB-119 | PAD,6X9,2HLS,RIGHT,W/BP,YEW GRN | 40.19 |
| CWPD1122RB-120 | PAD,6X9,2HLS,RIGHT,W/BP,DSTY JD | 40.2 |
| CWPD1122RB-121 | PAD,6X9,2HLS,RIGHT,W/BP,TER COT | 40.21 |
| CWPD1122RB-122 | PAD,6X9,2HLS,RIGHT,W/BP,PAPRIKA | 40.22 |
| CWPD1122RB-123 | PAD,6X9,2HLS,RIGHT,W/BP,ASH LTHR | 40.23 |
| CWPD1122RB-124 | PAD,6X9,2HL,RIGHT,W/BP,CERULEAN LTH | 40.24 |
| CWPD1122RB-125 | PAD,6X9,2HL,RIGHT,W/BP,CHARCOAL LTH | 40.25 |
| CWPD1122RB-126 | PAD,6X9,2HLS,RIGHT,W/BP,HUNTER LTHR | 40.26 |
| CWPD1122RB-127 | PAD,6X9,2HLS,RIGHT,W/BP,MOSS LTHR | 40.27 |
| CWPD1122RB-128 | PAD,6X9,2HLS,RIGHT,W/BP,SPICE LTHR | 40.28 |
| CWPD1122RB-129 | PAD,6X9,2HLS,RIGHT,W/BP,TOMATO LTHR | 40.29 |
| CWHCYN050-100 | SCREW,HEX HEAD,BLK XYLAN,1/2-13 X 1 | 41 |
| CWPD1141J-101 | PAD,4X19,2HOLES,W/BP,BLACK, W/SLIP | 41.01 |
| CWPD1141J-102 | PAD,4X19,2HOLES,W/BP,RYL BL, W/SLIP | 41.02 |
| CWPD1141J-103 | PAD,4X19,2HOLES,W/BP,DVE GRY, W/SLI | 41.03 |
| CWPD1141J-104 | PAD,4X19,2HOLES,W/BP,CROCUS, W/SLIP | 41.04 |
| CWPD1141J-105 | PAD,4X19,2HOLES,W/BP,GROTTO, W/SLIP | 41.05 |
| CWPD1141J-106 | PAD,4X19,2HOLES,W/BP,GRAPHITE, W/SL | 41.06 |
| CWPD1141J-107 | PAD,4X19,2HOLES,W/BP,RED, W/SLIP | 41.07 |
| CWPD1141J-108 | PAD,4X19,2HOLES,W/BP,CHN GRN, W/SLI | 41.08 |
| CWPD1141J-109 | PAD,4X19,2HOLES,W/BP,TURQSE,W/SLIP | 41.09 |
| CWPD1141J-110 | PAD,4X19,2HOLES,W/BP,RASP,W/SLIP | 41.1 |
| CWPD1141J-111 | PAD,4X19,2HOLES,W/BP,PLUM, W/SLIP | 41.11 |
| CWPD1141J-112 | PAD,4X19,2HOLES,W/BP,REGIMENT,W/SLI | 41.12 |
| CWPD1141J-113 | PAD,4X19,2HOLES,W/BP,SPC BLUE,W/SLI | 41.13 |
| CWPD1141J-115 | PAD,4X19,2HOLES,W/BP,BLK LTHR,W/SLI | 41.15 |
| CWPD1141J-116 | PAD,4X19,2HOLES,W/BP,NVBL LTH,W/SLI | 41.16 |
| CWPD1141J-117 | PAD,4X19,2HOLES,W/BP,PUTTY,W/SLIP | 41.17 |
| CWPD1141J-118 | PAD,4X19,2HOLES,W/BP,IMPRL BL,W/SLI | 41.18 |
| CWPD1141J-119 | PAD,4X19,2HOLES,W/BP,YEW GRN,W/SLIP | 41.19 |
| CWPD1141J-120 | PAD,4X19,2HOLES,W/BP,DSTY JD,W/SLIP | 41.2 |
| CWPD1141J-121 | PAD,4X19,2HOLES,W/BP,TER COT,W/SLIP | 41.21 |
| CWPD1141J-122 | PAD,4X19,2HOLES,W/BP,PAPRIKA,W/SLIP | 41.22 |
| CWPD1141J-123 | PAD,4X19,2HOLES,W/BP,ASH LTHR,W/SLI | 41.23 |
| CWPD1141J-124 | PAD,4X19,2HOLES,W/BP,CERULEAN LTHR, | 41.24 |
| CWPD1141J-125 | PAD,4X19,2HOLES,W/BP,CHARCOAL LTHR, | 41.25 |
| CWPD1141J-126 | PAD,4X19,2HOLES,W/BP,HUNTER LTHR,W/ | 41.26 |
| CWPD1141J-127 | PAD,4X19,2HOLES,W/BP,MOSS LTHR,W/SL | 41.27 |
| CWPD1141J-128 | PAD,4X19,2HOLES,W/BP,SPICE LTHR,W/S | 41.28 |

| | | |
|----------------|-------------------------------------|-------|
| CWPD1141J-129 | PAD,4X19,2HOLES,W/BP,TOMATO LTHR,W/ | 41.29 |
| CWPD1207B-101 | PAD,5X9X14.5,4HOLES,W/BP,BLACK | 42.01 |
| CWPD1207B-102 | PAD,5X9X14.5,4HOLES,W/BP,RYL BL | 42.02 |
| CWPD1207B-103 | PAD,5X9X14.5,4HOLES,W/BP,DVE GRY | 42.03 |
| CWPD1207B-104 | PAD,5X9X14.5,4HOLES,W/BP,CROCUS | 42.04 |
| CWPD1207B-105 | PAD,5X9X14.5,4HOLES,W/BP,GROTTO | 42.05 |
| CWPD1207B-106 | PAD,5X9X14.5,4HOLES,W/BP,GRAPHITE | 42.06 |
| CWPD1207B-107 | PAD,5X9X14.5,4HOLES,W/BP,RED | 42.07 |
| CWPD1207B-108 | PAD,5X9X14.5,4HOLES,W/BP,CHN GRN | 42.08 |
| CWPD1207B-109 | PAD,5X9X14.5,4HOLES,W/BP,TURQSE | 42.09 |
| CWPD1207B-110 | PAD,5X9X14.5,4HOLES,W/BP,RASP | 42.1 |
| CWPD1207B-111 | PAD,5X9X14.5,4HOLES,W/BP,PLUM | 42.11 |
| CWPD1207B-112 | PAD,5X9X14.5,4HOLES,W/BP,REGIMENT | 42.12 |
| CWPD1207B-113 | PAD,5X9X14.5,4HOLES,W/BP,SPC BLUE | 42.13 |
| CWPD1207B-115 | PAD,5X9X14.5,4HOLES,W/BP,BLK LTHR | 42.15 |
| CWPD1207B-116 | PAD,5X9X14.5,4HOLES,W/BP,NVBL LTH | 42.16 |
| CWPD1207B-117 | PAD,5X9X14.5,4HOLES,W/BP,PUTTY | 42.17 |
| CWPD1207B-118 | PAD,5X9X14.5,4HOLES,W/BP,IMPRL BL | 42.18 |
| CWPD1207B-119 | PAD,5X9X14.5,4HOLES,W/BP,YEW GRN | 42.19 |
| CWPD1207B-120 | PAD,5X9X14.5,4HOLES,W/BP,DSTY JD | 42.2 |
| CWPD1207B-121 | PAD,5X9X14.5,4HOLES,W/BP,TER COT | 42.21 |
| CWPD1207B-122 | PAD,5X9X14.5,4HOLES,W/BP,PAPRIKA | 42.22 |
| CWPD1207B-123 | PAD,5X9X14.5,4HLS,W/BP,ASH LTHR | 42.23 |
| CWPD1207B-124 | PAD,5X9X14.5,4HLS,W/BP,CERULAN LTHR | 42.24 |
| CWPD1207B-125 | PAD,5X9X14.5,4HLS,W/BP,CHARCOAL LTH | 42.25 |
| CWPD1207B-126 | PAD,5X9X14.5,4HLS,W/BP,HUNTER LTHR | 42.26 |
| CWPD1207B-127 | PAD,5X9X14.5,4HLS,W/BP,MOSS LTHR | 42.27 |
| CWPD1207B-128 | PAD,5X9X14.5,4HLS,W/BP,SPICE LTHR | 42.28 |
| CWPD1207B-129 | PAD,5X9X14.5,4HLS,W/BP,TOMATO LTH | 42.29 |
| CWPF1016-731 | BAR,,FLAT CR/HR, 3/8 X 2 X 8 1/4, 3 | 43 |
| CWPF1256-731 | TUBE,STEEL, RND, DOM, 2 OD X 1 ID X | 44 |
| CWSA1612-731 | ASSY,CAM SHAFT PIVOT, BLK ZN | 45 |
| CWSA2052-721 | ASSY,CAM SELECTOR, WRKL BLK | 46 |
| CW30106-200 | WEIGHT STACK,200 LBS,MTP-S,1187R,19 | 47 |
| CWHCYN044-375 | SCREW, HEX HEAD , BLK XYLA | 48 |
| CWKADLN050-081 | NUT, ACORN, 1/2-13 | 49 |
| CWKMYN044-038 | NUT, HEX, UNC, 7/16-14, BLK XYLAN | 50 |
| CWWBKN038-007 | WASHER, FLAT, TYPE A, SAE, 3/8 ID | 50 |
| CWKAYN031-025 | LOCKNUT, NYLON INSERT, HALF, UNC, | 51 |
| CWWBKN050-010 | WASHER, FLAT, TYPE A, SAE, 1/2 ID X | 51 |
| CWKAYN063-075 | LOCKNUT, NYLON INSERT, FULL, UNC, 5 | 52 |
| CW12537-109 | NUT,INSERT,THIN-NUT,LARGE FLANGE | 53 |
| CWLDNN031-200 | PIN, ROLL, DIA 5/16 X 2.00 | 53 |
| CWWALYN038-009 | WASHER, SPLIT, 3/8 ID, BLK XYLAN | 53 |
| CWLDNN031-200 | PIN, ROLL, DIA 5/16 X 2.00 | 54 |
| CWWALYN050-013 | WASHER, SPLIT, 1/2 ID, BLK XYLAN | 54 |
| CWCAYN038-125 | SCREW, SOCKET HEAD, BLK X | 55 |
| CWTAYN031-125 | SCREW, BUTTON HEAD, BLK XYLAN, 5/1 | 55 |
| CWTAYN031-100 | SCREW, BUTTON HEAD, BLK XYLAN, 5/1 | 56 |
| CWTAYN031-150 | SCREW, BUTTON HEAD, BLK XYLAN,5/16 | 57 |
| CWTAYN031-250 | SCREW, BUTTON HEAD, BLK XYLAN, 5/ | 58 |

| | | |
|----------------|-------------------------------------|-----|
| CW31784-731 | STOP PLUG, BLK ZN | 59 |
| CWBFNN050-250 | STUD, 1/2-13 X 2 1/2 | 59 |
| CWWBKN031-007 | WASHER, FLAT, TYPE A, SAE, 5/16 ID | 60 |
| CWWALYN031-008 | WASHER, SPLIT, 5/16 ID, BL | 61 |
| CWWALYN044-011 | WASHER, SPLIT, 7/16 ID, BLK XYLAN | 62 |
| CWWALYN050-013 | WASHER, SPLIT, 1/2 ID, BLK XYLAN | 63 |
| CWRANN063-300 | BOLT, SHOULDER, 5/8 - 11 X 3/4 X 3 | 64 |
| CWRANN019-125 | BOLT, SHOULDER, 10-24 X 1/4 X 1 1/4 | 65 |
| CWKDYN019-023 | LOCKNUT, NYLON INSERT, FULL,UNC, 10 | 66 |
| CW30010-101 | LABEL,WARNING STRENGTH | 67 |
| CW30038-101 | LABEL,INSTRUCTION,405 | 68 |
| CW31756-101 | LABEL, PRECOR USA ICARIAN LINE | 69 |
| CW12634-101 | SPRING, TORSION 90 DEG X 0.484 X 0. | 72 |
| CW31770-742 | LATCH PIVOTING PIN, CLR ZN | 73 |
| CWAMNN028-003 | RING, RETAINING, 2-TURN, SPIRAL, SS | 74 |
| CW12633-101 | ENDCAP, REC TUBE, LDP, 1 1/2 X 3 1 | 75 |
| CW31784-731 | STOP PLUG, BLK ZN | 76 |
| CWAC1236-101 | GUIDE INSERT, PLASTIC WITHOUT HOLE, | 99 |
| CWAC1236-102 | GUIDE INSERT, PLASTIC WITH HOLE, BL | 100 |
| CWAC220-901 | HANDLE END CAP W/SET SCREWS, DIA 3/ | 101 |
| CWGR2505-000 | GRIP,RUBBER,3/4" DIA, 5" | 102 |
| CW10510-721 | ASSY, PLATE, WEIGHT, 10 LBS, WRKL B | 201 |
| CW10520-721 | ASSY, PLATE, WEIGHT, 20 LBS, WRKL B | 202 |
| CWAC1133-101 | BUSHING, WEIGHT PLATE, LDPE PLASTIC | 203 |
| CW30172-751 | ASSY, 4.00 IN WEIGHT STACK PIN AND | 227 |
| CW30173-751 | ASSY, 6.00 IN WEIGHT STACK PIN AND | 228 |
| CWLDNN038-200 | PIN, ROLL, DIA 3/8 X 2 | 250 |
| CW30184-901 | ASSY,BARREL, TOP PLATE,ALUMINUM | 251 |
| CW30391-721 | WELDMENT, WEIGHT, TOP, MTP-S, PF118 | 257 |
| CW10550-721 | PLATE, WEIGHT, MED TOP (MTP-S), 10 | 283 |
| CW10550-722 | PLATE, WEIGHT, MED TOP (MTP-S), 10 | 283 |
| CW30132-711 | SELECTOR STEM, 20 PLATE,0 .875 DIA, | 308 |
| CW30132-712 | SELECTOR STEM, 20 PLATE,0 .875 DIA, | 309 |
| CW30011-101 | LABEL,WARNING WEIGHT STACK | 311 |
| CWAC1185-101 | LABL,KEEP HND&FT CLR(CEMCO)3/8X6.75 | 312 |
| CW12401-106 | LABEL, WEIGHT PLATE, 20 LBS/ 8 KG | 319 |
| CW12401-110 | LABEL, WEIGHT PLATE, 30 LBS/ 13.6 K | 323 |
| CW12401-114 | LABEL, WEIGHT PLATE, 40 LBS/ 18.2 K | 327 |
| CW12401-118 | LABEL, WEIGHT PLATE, 50 LBS/ 22.7 K | 331 |
| CW12401-120 | LABEL, WEIGHT PLATE, 60 LBS/ 27.3 K | 333 |
| CW12401-122 | LABEL, WEIGHT PLATE, 70 LBS/ 31.8 K | 335 |
| CW12401-124 | LABEL, WEIGHT PLATE, 80 LBS/ 36.4 K | 337 |
| CW12401-126 | LABEL, WEIGHT PLATE, 90 LBS/ 40.9 K | 339 |
| CW12401-128 | LABEL, WEIGHT PLATE, 100 LBS/ 45.5 | 341 |
| CW12401-129 | LABEL, WEIGHT PLATE, 110 LBS/ 50 KG | 342 |
| CW12401-130 | LABEL, WEIGHT PLATE, 120 LBS/ 54.6 | 343 |
| CW12401-131 | LABEL, WEIGHT PLATE, 130 LBS/ 59.1 | 344 |
| CW12401-132 | LABEL, WEIGHT PLATE, 140 LBS/ 63.6 | 345 |
| CW12401-134 | LABEL, WEIGHT PLATE, 160 LBS/ 72.7 | 347 |
| CW12401-135 | LABEL, WEIGHT PLATE, 170 LBS/ 77.3 | 348 |
| CW12401-136 | LABEL, WEIGHT PLATE, 180 LBS/ 81.8 | 349 |

| | | |
|----------------|-------------------------------------|--------|
| CW12401-137 | LABEL, WEIGHT PLATE, 190 LBS/ 86.4 | 350 |
| CW12401-138 | LABEL, WEIGHT PLATE, 200 LBS/ 90.9 | 351 |
| CW12401-140 | LABEL, WEIGHT PLATE, 220 LBS/ 100 K | 353 |
| CW12401-142 | LABEL, WEIGHT PLATE, 240 LBS/ 109.1 | 355 |
| CW12401-144 | LABEL, WEIGHT PLATE, 260 LBS/ 118.2 | 357 |
| CW12401-145 | LABEL, WEIGHT PLATE, 280 LBS/ 127.3 | 358 |
| CW12537-109 | NUT,INSERT,THIN-NUT,LARGE FLANGE | 400 |
| CW30126-101 | LABEL,VINYL, PRECOR, 3.25 X 18.0 | 401 |
| CWKAYN031-025 | LOCKNUT, NYLON INSERT, HALF, UNC, | 402 |
| CWPF2308-721 | BAR, FLAT 3/16 X 1 X (26 3/8), 4 BE | 403 |
| CWPF3143-211 | SHROUD,SHEET,STEEL,3/32 THICK,4 BEN | 404.01 |
| CWPF3143-221 | SHROUD,SHEET,STEEL,3/32 THICK,4 BEN | 404.02 |
| CWPF3143-231 | SHROUD,SHEET,STEEL,3/32 THICK,4 BEN | 404.03 |
| CWPF3143-241 | SHROUD,SHEET,STEEL,3/32 THICK,4 BEN | 404.04 |
| CWPF3143-251 | SHROUD,SHEET,STEEL,3/32 THICK,4 BEN | 404.05 |
| CWPF3143-261 | SHROUD,SHEET,STEEL,3/32 THICK,4 BEN | 404.06 |
| CWPF3143-271 | SHROUD,SHEET,STEEL,3/32 THICK,4 BEN | 404.07 |
| CWPF3143-281 | SHROUD,SHEET,STEEL,3/32 THICK,4 BEN | 404.08 |
| CWPF3143-291 | SHROUD,SHEET,STEEL,3/32 THICK,4 BEN | 404.09 |
| CWPF3143-311 | SHROUD,SHEET,STEEL,3/32 THICK,4 BEN | 404.11 |
| CWPF3143-321 | SHROUD,SHEET,STEEL,3/32 THICK,4 BEN | 404.12 |
| CWPF3143-331 | SHROUD,SHEET,STEEL,3/32 THICK,4 BEN | 404.13 |
| CWPF3143-341 | SHROUD,SHEET,STEEL,3/32 THICK,4 BEN | 404.14 |
| CWPF3143-351 | SHROUD,SHEET,STEEL,3/32 THICK,4 BEN | 404.15 |
| CWPF3143-361 | SHROUD,SHEET,STEEL,3/32 THICK,4 BEN | 404.16 |
| CWPF3143-711 | SHROUD,SHEET,STEEL,3/32 THICK,4 BEN | 404.17 |
| CWPF3144-721 | SHROUD BRKT,PLATE,STEEL,1/8 THICK,1 | 405 |
| CWTAYN031-100 | SCREW, BUTTON HEAD, BLK XYLAN, 5/1 | 406 |
| CWWALYN031-008 | WASHER, SPLIT, 5/16 ID, BL | 407 |
| CWWBKN031-007 | WASHER, FLAT, TYPE A, SAE, 5/16 ID | 408 |
| CW12401-134 | LABEL, WEIGHT PLATE, 160 LBS/ 72.7 | 437 |
| CWAC1177-101 | FLOOR PROTECTOR, RUBBER, 4.563 X 4. | 501 |

405 Vertical Pec Deck

| Part Number | Description | Bubble Number |
|--------------------|------------------------------------|----------------------|
| CW405SA6-211 | ASSY,MAIN FRAME,405,SKY WHITE | 1.01 |
| CW405SA6-212 | ASSY,MAIN FRAME,405,SKY WHITE | 1.01 |
| CW405SA6-221 | ASSY,MAIN FRAME,405,BLACK | 1.02 |
| CW405SA6-222 | ASSY,MAIN FRAME,405,BLACK | 1.02 |
| CW405SA6-231 | ASSY,MAIN FRAME,405,RED | 1.03 |
| CW405SA6-241 | ASSY,MAIN FRAME,405,PLATINUM SPRKL | 1.04 |
| CW405SA6-251 | ASSY,MAIN FRAME,405,SILVER | 1.05 |
| CW405SA6-261 | ASSY,MAIN FRAME,405,BLUE | 1.06 |
| CW405SA6-271 | ASSY,MAIN FRAME,405,CHARCOAL | 1.07 |
| CW405SA6-281 | ASSY,MAIN FRAME,405,CATHEDRAL GREY | 1.08 |
| CW405SA6-291 | ASSY,MAIN FRAME,405,SILVER VIEN | 1.09 |
| CW405SA6-311 | ASSY,MAIN FRAME,405,STONE HG | 1.11 |
| CW405SA6-312 | ASSY,MAIN FRAME,405,STONE HG | 1.11 |
| CW405SA6-321 | ASSY,MAIN FRAME,405, TITANIUM HG | 1.12 |
| CW405SA6-322 | ASSY,MAIN FRAME,405, TITANIUM HG | 1.12 |
| CW405SA6-331 | ASSY,MAIN FRAME,405, WHITE GLOSS | 1.13 |
| CW405SA6-341 | ASSY,MAIN FRAME,405, BLACK ONYX | 1.14 |
| CW405SA6-351 | ASSY,MAIN FRAME,405, LIGHT BRONZE | 1.15 |
| CW405SA6-352 | ASSY,MAIN FRAME,405, LIGHT BRONZE | 1.15 |
| CW405SA6-361 | ASSY,MAIN FRAME,405, SAPPHIRE BLUE | 1.16 |
| CW405SA6-362 | ASSY,MAIN FRAME,405, SAPPHIRE BLUE | 1.16 |
| CW405SA1-211 | ASSY,ARM,UPPER,405,SKY WHITE | 2.01 |
| CW405SA1-221 | ASSY,ARM,UPPER,405,BLACK | 2.02 |
| CW405SA1-231 | ASSY,ARM,UPPER,405,RED | 2.03 |
| CW405SA1-241 | ASSY,ARM,UPPER,405,PLAT SPKLE | 2.04 |
| CW405SA1-251 | ASSY,ARM,UPPER,405,SILVER | 2.05 |
| CW405SA1-261 | ASSY,ARM,UPPER,405,BLUE | 2.06 |
| CW405SA1-271 | ASSY,ARM,UPPER,405,CHARCOAL | 2.07 |
| CW405SA1-281 | ASSY,ARM,UPPER,405,CATH GRY | 2.08 |
| CW405SA1-291 | ASSY,ARM,UPPER,405,SILVER VIEN | 2.09 |
| CW405SA1-311 | ASSY,ARM,UPPER,405,STONE HG | 2.11 |
| CW405SA1-321 | ASSY,ARM,UPPER,405,TITANIUM HG | 2.12 |
| CW405SA1-331 | ASSY,ARM,UPPER,405,WHITE GLOSS | 2.13 |
| CW405SA1-341 | ASSY,ARM,UPPER,405,BLACK ONYX | 2.14 |
| CW405SA1-351 | ASSY,ARM,UPPER,405,LIGHT BRONZE | 2.15 |
| CW405SA1-361 | ASSY,ARM,UPPER,405,SAPPHIRE BLUE | 2.16 |
| CW405SA2-211 | ASSY,ARM,LEFT,405,SKY WHITE | 3.01 |
| CW405SA2-221 | ASSY,ARM,LEFT,405,BLACK | 3.02 |
| CW405SA2-231 | ASSY,ARM,LEFT,405,RED | 3.03 |
| CW405SA2-241 | ASSY,ARM,LEFT,405,PLAT SPKLE | 3.04 |
| CW405SA2-251 | ASSY,ARM,LEFT,405,SILVER | 3.05 |
| CW405SA2-261 | ASSY,ARM,LEFT,405,BLUE | 3.06 |
| CW405SA2-271 | ASSY,ARM,LEFT,405,CHARCOAL | 3.07 |
| CW405SA2-281 | ASSY,ARM,LEFT,405,CATH GRY | 3.08 |
| CW405SA2-291 | ASSY,ARM,LEFT,405,SILVER VIEN | 3.09 |
| CW405SA2-311 | ASSY,ARM,LEFT,405,STONE HG | 3.11 |
| CW405SA2-321 | ASSY,ARM,LEFT,405,TITANIUM HG | 3.12 |
| CW405SA2-331 | ASSY,ARM,LEFT,405,WHITE GLOSS | 3.13 |
| CW405SA2-341 | ASSY,ARM,LEFT,405,BLACK ONYX | 3.14 |

| | | |
|--------------|-------------------------------------|------|
| CW405SA2-351 | ASSY,ARM,LEFT,405,LIGHT BRONZE | 3.15 |
| CW405SA2-361 | ASSY,ARM,LEFT,405,SAPPHIRE BLUE | 3.16 |
| CW405SA3-211 | ASSY,ARM,RIGHT,405,SKY WHITE | 4.01 |
| CW405SA3-221 | ASSY,ARM,RIGHT,405,BLACK | 4.02 |
| CW405SA3-231 | ASSY,ARM,RIGHT,405,RED | 4.03 |
| CW405SA3-251 | ASSY,ARM,RIGHT,405,SILVER | 4.05 |
| CW405SA3-261 | ASSY,ARM,RIGHT,405,BLUE | 4.06 |
| CW405SA3-271 | ASSY,ARM,RIGHT,405,CHARCOAL | 4.07 |
| CW405SA3-281 | ASSY,ARM,RIGHT,405,CATH GRY | 4.08 |
| CW405SA3-291 | ASSY,ARM,RIGHT,405,SILVER VIEN | 4.09 |
| CW405SA3-311 | ASSY,ARM,RIGHT,405,STONE HG | 4.11 |
| CW405SA3-321 | ASSY,ARM,RIGHT,405,TITANIUM HG | 4.12 |
| CW405SA3-331 | ASSY,ARM,RIGHT,405,WHITE GLOSS | 4.13 |
| CW405SA3-341 | ASSY,ARM,RIGHT,405,BLACK ONYX | 4.14 |
| CW405SA3-351 | ASSY,ARM,RIGHT,405,LIGHT BRONZE | 4.15 |
| CW405SA3-361 | ASSY,ARM,RIGHT,405,SAPPHIRE BLUE | 4.16 |
| CW405SA4-211 | ASSY,RIGHT CAM,405,SKY WHITE | 5.01 |
| CW405SA4-221 | ASSY,RIGHT CAM,405,BLACK | 5.02 |
| CW405SA4-231 | ASSY,RIGHT CAM,405,RED | 5.03 |
| CW405SA4-241 | ASSY,RIGHT CAM,405,PLATINUM SPRKL | 5.04 |
| CW405SA4-251 | ASSY,RIGHT CAM,405,SILVER | 5.05 |
| CW405SA4-261 | ASSY,RIGHT CAM,405,BLUE | 5.06 |
| CW405SA4-271 | ASSY,RIGHT CAM,405,CHARCOAL | 5.07 |
| CW405SA4-281 | ASSY,RIGHT CAM,405,CATHEDRAL GREY | 5.08 |
| CW405SA4-291 | ASSY,RIGHT CAM,405,SILVER VIEN | 5.09 |
| CW405SA4-311 | ASSY,RIGHT CAM,405,STONE HG | 5.11 |
| CW405SA4-321 | ASSY,RIGHT CAM,405,TITANIUM HG | 5.12 |
| CW405SA4-331 | ASSY,RIGHT CAM,405,WHITE GLOSS | 5.13 |
| CW405SA4-341 | ASSY,RIGHT CAM,405,BLACK ONYX | 5.14 |
| CW405SA4-351 | ASSY,RIGHT CAM,405,LIGHT BRONZE | 5.15 |
| CW405SA4-361 | ASSY,RIGHT CAM,405,SAPPHIRE BLUE | 5.16 |
| CW405SA5-211 | ASSY,LEFT CAM,405,SKY WHITE | 6.01 |
| CW405SA5-221 | ASSY,LEFT CAM,405,BLACK | 6.02 |
| CW405SA5-231 | ASSY,LEFT CAM,405,RED | 6.03 |
| CW405SA5-241 | ASSY,LEFT CAM,405,PLATINUM SPRKL | 6.04 |
| CW405SA5-251 | ASSY,LEFT CAM,405,SILVER | 6.05 |
| CW405SA5-261 | ASSY,LEFT CAM,405,BLUE | 6.06 |
| CW405SA5-271 | ASSY,LEFT CAM,405,CHARCOAL | 6.07 |
| CW405SA5-281 | ASSY,LEFT CAM,405,CATHEDRAL GREY | 6.08 |
| CW405SA5-291 | ASSY,LEFT CAM,405,SILVER VIEN | 6.09 |
| CW405SA5-311 | ASSY,LEFT CAM,405,STONE HG | 6.11 |
| CW405SA5-321 | ASSY,LEFT CAM,405,TITANIUM HG | 6.12 |
| CW405SA5-331 | ASSY,LEFT CAM,405,WHITE GLOSS | 6.13 |
| CW405SA5-341 | ASSY,LEFT CAM,405,BLACK ONYX | 6.14 |
| CW405SA5-351 | ASSY,LEFT CAM,405,LIGHT BRONZE | 6.15 |
| CW405SA5-361 | ASSY,LEFT CAM,405,SAPPHIRE BLUE | 6.16 |
| CWAC1009-101 | PULLEY, 4 1/2 DIA. X 1/2 ID | 10 |
| CWAC1010-101 | PULLEY, 6 DIA X 1/2 ID | 11 |
| CW10043-133 | BUSHING, BRONZE, 3/4" ID X 1" OD | 12 |
| CW10043-134 | BUSHING, BRONZE, 1" ID X 1 1/4" OD | 13 |
| CW12405-101 | PILLOW BLOCK, BEARING, FLANGE, 4 BO | 14 |

| | | |
|----------------|-------------------------------------|-------|
| CW12404-101 | CAP, GUIDE ROD,DIA 3/4, BLK | 15 |
| CW32460-321 | ASSY, RATCHETING LEVER, TITANIUM | 16 |
| CW30501-751 | ASSY, POP PIN, 0.450 DIA HANDLE, BL | 17 |
| CW11311-102 | ENDCAP, REC TUBE, 2X4, BLK PLASTIC | 18 |
| CW10514-102 | CAP, VINYL DIP MOLDED, DIA 2.00 | 19 |
| CW12402-101 | BUMPER, WEIGHT STACK, BLK RUBBER | 20 |
| CW12575-101 | MOULDED BUMPON, BLACK, 31.75MM SQ (| 21 |
| CWGR2610-000 | GRIP,RUBBER, 1" DIA, 10" | 26 |
| CWAC1228-901 | SPACER, ALU,.328 ID X .625 OD X .25 | 27 |
| CWAC1229-901 | SPACER, ALU,.328 ID X .625 OD X 1.5 | 28 |
| CWAC218-901 | HANDLE END CAP W/SET SCREWS, DIA 1" | 30 |
| CWPF1216-711 | GUIDE ROD,3/4 X (62 5/8), (#6), CHM | 32 |
| CW30181-711 | ASSY,SEAT SUPPORT,9 HOLE,CHM | 33 |
| CW32535-711 | ASSEMBLY, SEAT ADJUSTMENT, 8 HOLE, | 33 |
| CWCP1044-101 | CUT PIECE, CREPE, 1/4 X 3 X 9 1/4, | 34 |
| CWCP1044-102 | CUT PIECE, CREPE, 1/4 X 3 X 9 1/4, | 35 |
| CW30012-103 | CUT PIECE, ABS BLACK, 1/8 X 1 3/4 X | 37 |
| CWCP8106-000 | CP, ABS CHANNEL, 1/8 X 2 X 4 X 6 | 37 |
| CWCLHH178-500 | ASSY, CABLE, 405, 505 | 38 |
| CWPD1122LB-101 | PAD,6X9,2HLS,LEFT,W/BP,BLACK | 39.01 |
| CWPD1122LB-102 | PAD,6X9,2HLS,LEFT,W/BP,RYL BL | 39.02 |
| CWPD1122LB-103 | PAD,6X9,2HLS,LEFT,W/BP,DVE GRY | 39.03 |
| CWPD1122LB-104 | PAD,6X9,2HLS,LEFT,W/BP,CROCUS | 39.04 |
| CWPD1122LB-105 | PAD,6X9,2HLS,LEFT,W/BP,GROTTO | 39.05 |
| CWPD1122LB-106 | PAD,6X9,2HLS,LEFT,W/BP,GRAPHITE | 39.06 |
| CWPD1122LB-107 | PAD,6X9,2HLS,LEFT,W/BP,RED | 39.07 |
| CWPD1122LB-108 | PAD,6X9,2HLS,LEFT,W/BP,CHN GRN | 39.08 |
| CWPD1122LB-109 | PAD,6X9,2HLS,LEFT,W/BP,TURQSE | 39.09 |
| CWPD1122LB-110 | PAD,6X9,2HLS,LEFT,W/BP,RASP | 39.1 |
| CWPD1122LB-111 | PAD,6X9,2HLS,LEFT,W/BP,PLUM | 39.11 |
| CWPD1122LB-112 | PAD,6X9,2HLS,LEFT,W/BP,REGIMENT | 39.12 |
| CWPD1122LB-113 | PAD,6X9,2HLS,LEFT,W/BP,SPC BLUE | 39.13 |
| CWPD1122LB-115 | PAD,6X9,2HLS,LEFT,W/BP,BLK LTHR | 39.15 |
| CWPD1122LB-116 | PAD,6X9,2HLS,LEFT,W/BP,NVBL LTH | 39.16 |
| CWPD1122LB-117 | PAD,6X9,2HLS,LEFT,W/BP,PUTTY | 39.17 |
| CWPD1122LB-118 | PAD,6X9,2HLS,LEFT,W/BP,IMPRL BL | 39.18 |
| CWPD1122LB-119 | PAD,6X9,2HLS,LEFT,W/BP,YEW GRN | 39.19 |
| CWPD1122LB-120 | PAD,6X9,2HLS,LEFT,W/BP,DSTY JD | 39.2 |
| CWPD1122LB-121 | PAD,6X9,2HLS,LEFT,W/BP,TER COT | 39.21 |
| CWPD1122LB-122 | PAD,6X9,2HLS,LEFT,W/BP,PAPRIKA | 39.22 |
| CWPD1122LB-123 | PAD,6X9,2HLS,LEFT,W/BP,ASH LTHR | 39.23 |
| CWPD1122LB-124 | PAD,6X9,2HLS,LEFT,W/BP,CERULEAN LTH | 39.24 |
| CWPD1122LB-125 | PAD,6X9,2HLS,LEFT,W/BP,CHARCOAL LTH | 39.25 |
| CWPD1122LB-127 | PAD,6X9,2HLS,LEFT,W/BP,MOSS LTHR | 39.27 |
| CWPD1122LB-128 | PAD,6X9,2HLS,LEFT,W/BP,SPICE LTHR | 39.28 |
| CWPD1122LB-129 | PAD,6X9,2HLS,LEFT,W/BP,TOMATO LTHR | 39.29 |
| CWPD1122RB-101 | PAD,6X9,2HLS,RIGHT,W/BP,BLACK | 40.01 |
| CWPD1122RB-102 | PAD,6X9,2HLS,RIGHT,W/BP,RYL BL | 40.02 |
| CWPD1122RB-103 | PAD,6X9,2HLS,RIGHT,W/BP,DVE GRY | 40.03 |
| CWPD1122RB-104 | PAD,6X9,2HLS,RIGHT,W/BP,CROCUS | 40.04 |
| CWPD1122RB-105 | PAD,6X9,2HLS,RIGHT,W/BP,GROTTO | 40.05 |

| | | |
|----------------|-------------------------------------|-------|
| CWPD1122RB-106 | PAD,6X9,2HLS,RIGHT,W/BP,GRAPHITE | 40.06 |
| CWPD1122RB-107 | PAD,6X9,2HLS,RIGHT,W/BP,RED | 40.07 |
| CWPD1122RB-108 | PAD,6X9,2HLS,RIGHT,W/BP,CHN GRN | 40.08 |
| CWPD1122RB-109 | PAD,6X9,2HLS,RIGHT,W/BP,TURQSE | 40.09 |
| CWPD1122RB-110 | PAD,6X9,2HLS,RIGHT,W/BP,RASP | 40.1 |
| CWPD1122RB-111 | PAD,6X9,2HLS,RIGHT,W/BP,PLUM | 40.11 |
| CWPD1122RB-112 | PAD,6X9,2HLS,RIGHT,W/BP,REGIMENT | 40.12 |
| CWPD1122RB-113 | PAD,6X9,2HLS,RIGHT,W/BP,SPC BLUE | 40.13 |
| CWPD1122RB-115 | PAD,6X9,2HLS,RIGHT,W/BP,BLK LTHR | 40.15 |
| CWPD1122RB-116 | PAD,6X9,2HLS,RIGHT,W/BP,NVBL LTH | 40.16 |
| CWPD1122RB-117 | PAD,6X9,2HLS,RIGHT,W/BP,PUTTY | 40.17 |
| CWPD1122RB-118 | PAD,6X9,2HLS,RIGHT,W/BP,IMPRL BL | 40.18 |
| CWPD1122RB-119 | PAD,6X9,2HLS,RIGHT,W/BP,YEW GRN | 40.19 |
| CWPD1122RB-120 | PAD,6X9,2HLS,RIGHT,W/BP,DSTY JD | 40.2 |
| CWPD1122RB-121 | PAD,6X9,2HLS,RIGHT,W/BP,TER COT | 40.21 |
| CWPD1122RB-122 | PAD,6X9,2HLS,RIGHT,W/BP,PAPRIKA | 40.22 |
| CWPD1122RB-123 | PAD,6X9,2HLS,RIGHT,W/BP,ASH LTHR | 40.23 |
| CWPD1122RB-124 | PAD,6X9,2HL,RIGHT,W/BP,CERULEAN LTH | 40.24 |
| CWPD1122RB-125 | PAD,6X9,2HL,RIGHT,W/BP,CHARCOAL LTH | 40.25 |
| CWPD1122RB-126 | PAD,6X9,2HLS,RIGHT,W/BP,HUNTER LTHR | 40.26 |
| CWPD1122RB-127 | PAD,6X9,2HLS,RIGHT,W/BP,MOSS LTHR | 40.27 |
| CWPD1122RB-128 | PAD,6X9,2HLS,RIGHT,W/BP,SPICE LTHR | 40.28 |
| CWPD1122RB-129 | PAD,6X9,2HLS,RIGHT,W/BP,TOMATO LTHR | 40.29 |
| CWHCYN050-100 | SCREW,HEX HEAD,BLK XYLAN,1/2-13 X 1 | 41 |
| CWPD1141J-101 | PAD,4X19,2HOLES,W/BP,BLACK, W/SLIP | 41.01 |
| CWPD1141J-102 | PAD,4X19,2HOLES,W/BP,RYL BL, W/SLIP | 41.02 |
| CWPD1141J-103 | PAD,4X19,2HOLES,W/BP,DVE GRY, W/SLI | 41.03 |
| CWPD1141J-104 | PAD,4X19,2HOLES,W/BP,CROCUS, W/SLIP | 41.04 |
| CWPD1141J-105 | PAD,4X19,2HOLES,W/BP,GROTTO, W/SLIP | 41.05 |
| CWPD1141J-106 | PAD,4X19,2HOLES,W/BP,GRAPHITE, W/SL | 41.06 |
| CWPD1141J-107 | PAD,4X19,2HOLES,W/BP,RED, W/SLIP | 41.07 |
| CWPD1141J-108 | PAD,4X19,2HOLES,W/BP,CHN GRN, W/SLI | 41.08 |
| CWPD1141J-109 | PAD,4X19,2HOLES,W/BP,TURQSE,W/SLIP | 41.09 |
| CWPD1141J-110 | PAD,4X19,2HOLES,W/BP,RASP,W/SLIP | 41.1 |
| CWPD1141J-111 | PAD,4X19,2HOLES,W/BP,PLUM, W/SLIP | 41.11 |
| CWPD1141J-112 | PAD,4X19,2HOLES,W/BP,REGIMENT,W/SLI | 41.12 |
| CWPD1141J-113 | PAD,4X19,2HOLES,W/BP,SPC BLUE,W/SLI | 41.13 |
| CWPD1141J-115 | PAD,4X19,2HOLES,W/BP,BLK LTHR,W/SLI | 41.15 |
| CWPD1141J-116 | PAD,4X19,2HOLES,W/BP,NVBL LTH,W/SLI | 41.16 |
| CWPD1141J-117 | PAD,4X19,2HOLES,W/BP,PUTTY,W/SLIP | 41.17 |
| CWPD1141J-118 | PAD,4X19,2HOLES,W/BP,IMPRL BL,W/SLI | 41.18 |
| CWPD1141J-119 | PAD,4X19,2HOLES,W/BP,YEW GRN,W/SLIP | 41.19 |
| CWPD1141J-120 | PAD,4X19,2HOLES,W/BP,DSTY JD,W/SLIP | 41.2 |
| CWPD1141J-121 | PAD,4X19,2HOLES,W/BP,TER COT,W/SLIP | 41.21 |
| CWPD1141J-122 | PAD,4X19,2HOLES,W/BP,PAPRIKA,W/SLIP | 41.22 |
| CWPD1141J-123 | PAD,4X19,2HOLES,W/BP,ASH LTHR,W/SLI | 41.23 |
| CWPD1141J-124 | PAD,4X19,2HOLES,W/BP,CERULEAN LTHR, | 41.24 |
| CWPD1141J-125 | PAD,4X19,2HOLES,W/BP,CHARCOAL LTHR, | 41.25 |
| CWPD1141J-126 | PAD,4X19,2HOLES,W/BP,HUNTER LTHR,W/ | 41.26 |
| CWPD1141J-127 | PAD,4X19,2HOLES,W/BP,MOSS LTHR,W/SL | 41.27 |
| CWPD1141J-128 | PAD,4X19,2HOLES,W/BP,SPICE LTHR,W/S | 41.28 |

| | | |
|----------------|-------------------------------------|-------|
| CWPD1141J-129 | PAD,4X19,2HOLES,W/BP,TOMATO LTHR,W/ | 41.29 |
| CWPD1207B-101 | PAD,5X9X14.5,4HOLES,W/BP,BLACK | 42.01 |
| CWPD1207B-102 | PAD,5X9X14.5,4HOLES,W/BP,RYL BL | 42.02 |
| CWPD1207B-103 | PAD,5X9X14.5,4HOLES,W/BP,DVE GRY | 42.03 |
| CWPD1207B-104 | PAD,5X9X14.5,4HOLES,W/BP,CROCUS | 42.04 |
| CWPD1207B-105 | PAD,5X9X14.5,4HOLES,W/BP,GROTTO | 42.05 |
| CWPD1207B-106 | PAD,5X9X14.5,4HOLES,W/BP,GRAPHITE | 42.06 |
| CWPD1207B-107 | PAD,5X9X14.5,4HOLES,W/BP,RED | 42.07 |
| CWPD1207B-108 | PAD,5X9X14.5,4HOLES,W/BP,CHN GRN | 42.08 |
| CWPD1207B-109 | PAD,5X9X14.5,4HOLES,W/BP,TURQSE | 42.09 |
| CWPD1207B-110 | PAD,5X9X14.5,4HOLES,W/BP,RASP | 42.1 |
| CWPD1207B-111 | PAD,5X9X14.5,4HOLES,W/BP,PLUM | 42.11 |
| CWPD1207B-112 | PAD,5X9X14.5,4HOLES,W/BP,REGIMENT | 42.12 |
| CWPD1207B-113 | PAD,5X9X14.5,4HOLES,W/BP,SPC BLUE | 42.13 |
| CWPD1207B-115 | PAD,5X9X14.5,4HOLES,W/BP,BLK LTHR | 42.15 |
| CWPD1207B-116 | PAD,5X9X14.5,4HOLES,W/BP,NVBL LTH | 42.16 |
| CWPD1207B-117 | PAD,5X9X14.5,4HOLES,W/BP,PUTTY | 42.17 |
| CWPD1207B-118 | PAD,5X9X14.5,4HOLES,W/BP,IMPRL BL | 42.18 |
| CWPD1207B-119 | PAD,5X9X14.5,4HOLES,W/BP,YEW GRN | 42.19 |
| CWPD1207B-120 | PAD,5X9X14.5,4HOLES,W/BP,DSTY JD | 42.2 |
| CWPD1207B-121 | PAD,5X9X14.5,4HOLES,W/BP,TER COT | 42.21 |
| CWPD1207B-122 | PAD,5X9X14.5,4HOLES,W/BP,PAPRIKA | 42.22 |
| CWPD1207B-123 | PAD,5X9X14.5,4HLS,W/BP,ASH LTHR | 42.23 |
| CWPD1207B-124 | PAD,5X9X14.5,4HLS,W/BP,CERULAN LTHR | 42.24 |
| CWPD1207B-125 | PAD,5X9X14.5,4HLS,W/BP,CHARCOAL LTH | 42.25 |
| CWPD1207B-126 | PAD,5X9X14.5,4HLS,W/BP,HUNTER LTHR | 42.26 |
| CWPD1207B-127 | PAD,5X9X14.5,4HLS,W/BP,MOSS LTHR | 42.27 |
| CWPD1207B-128 | PAD,5X9X14.5,4HLS,W/BP,SPICE LTHR | 42.28 |
| CWPD1207B-129 | PAD,5X9X14.5,4HLS,W/BP,TOMATO LTH | 42.29 |
| CWPF1016-731 | BAR,,FLAT CR/HR, 3/8 X 2 X 8 1/4, 3 | 43 |
| CWPF1256-731 | TUBE,STEEL, RND, DOM, 2 OD X 1 ID X | 44 |
| CWSA1612-731 | ASSY,CAM SHAFT PIVOT, BLK ZN | 45 |
| CWSA2052-721 | ASSY,CAM SELECTOR, WRKL BLK | 46 |
| CW30106-200 | WEIGHT STACK,200 LBS,MTP-S,1187R,19 | 47 |
| CWHCYN044-375 | SCREW, HEX HEAD , BLK XYLA | 48 |
| CWKADLN050-081 | NUT, ACORN, 1/2-13 | 49 |
| CWKMYN044-038 | NUT, HEX, UNC, 7/16-14, BLK XYLAN | 50 |
| CWWBKN038-007 | WASHER, FLAT, TYPE A, SAE, 3/8 ID | 50 |
| CWKAYN031-025 | LOCKNUT, NYLON INSERT, HALF, UNC, | 51 |
| CWWBKN050-010 | WASHER, FLAT, TYPE A, SAE, 1/2 ID X | 51 |
| CWKAYN063-075 | LOCKNUT, NYLON INSERT, FULL, UNC, 5 | 52 |
| CW12537-109 | NUT,INSERT,THIN-NUT,LARGE FLANGE | 53 |
| CWLDNN031-200 | PIN, ROLL, DIA 5/16 X 2.00 | 53 |
| CWWALYN038-009 | WASHER, SPLIT, 3/8 ID, BLK XYLAN | 53 |
| CWLDNN031-200 | PIN, ROLL, DIA 5/16 X 2.00 | 54 |
| CWWALYN050-013 | WASHER, SPLIT, 1/2 ID, BLK XYLAN | 54 |
| CWCAYN038-125 | SCREW, SOCKET HEAD, BLK X | 55 |
| CWTAYN031-125 | SCREW, BUTTON HEAD, BLK XYLAN, 5/1 | 55 |
| CWTAYN031-100 | SCREW, BUTTON HEAD, BLK XYLAN, 5/1 | 56 |
| CWTAYN031-150 | SCREW, BUTTON HEAD, BLK XYLAN,5/16 | 57 |
| CWTAYN031-250 | SCREW, BUTTON HEAD, BLK XYLAN, 5/ | 58 |

| | | |
|----------------|-------------------------------------|-----|
| CW31784-731 | STOP PLUG, BLK ZN | 59 |
| CWBFNN050-250 | STUD, 1/2-13 X 2 1/2 | 59 |
| CWWBKN031-007 | WASHER, FLAT, TYPE A, SAE, 5/16 ID | 60 |
| CWWALYN031-008 | WASHER, SPLIT, 5/16 ID, BL | 61 |
| CWWALYN044-011 | WASHER, SPLIT, 7/16 ID, BLK XYLAN | 62 |
| CWWALYN050-013 | WASHER, SPLIT, 1/2 ID, BLK XYLAN | 63 |
| CWRANN063-300 | BOLT, SHOULDER, 5/8 - 11 X 3/4 X 3 | 64 |
| CWRANN019-125 | BOLT, SHOULDER, 10-24 X 1/4 X 1 1/4 | 65 |
| CWKDYN019-023 | LOCKNUT, NYLON INSERT, FULL,UNC, 10 | 66 |
| CW30010-101 | LABEL,WARNING STRENGTH | 67 |
| CW30038-101 | LABEL,INSTRUCTION,405 | 68 |
| CW31756-101 | LABEL, PRECOR USA ICARIAN LINE | 69 |
| CW12634-101 | SPRING, TORSION 90 DEG X 0.484 X 0. | 72 |
| CW31770-742 | LATCH PIVOTING PIN, CLR ZN | 73 |
| CWAMNN028-003 | RING, RETAINING, 2-TURN, SPIRAL, SS | 74 |
| CW12633-101 | ENDCAP, REC TUBE, LDP, 1 1/2 X 3 1 | 75 |
| CW31784-731 | STOP PLUG, BLK ZN | 76 |
| CWAC1236-101 | GUIDE INSERT, PLASTIC WITHOUT HOLE, | 99 |
| CWAC1236-102 | GUIDE INSERT, PLASTIC WITH HOLE, BL | 100 |
| CWAC220-901 | HANDLE END CAP W/SET SCREWS, DIA 3/ | 101 |
| CWGR2505-000 | GRIP,RUBBER,3/4" DIA, 5" | 102 |
| CW10510-721 | ASSY, PLATE, WEIGHT, 10 LBS, WRKL B | 201 |
| CW10520-721 | ASSY, PLATE, WEIGHT, 20 LBS, WRKL B | 202 |
| CWAC1133-101 | BUSHING, WEIGHT PLATE, LDPE PLASTIC | 203 |
| CW30172-751 | ASSY, 4.00 IN WEIGHT STACK PIN AND | 227 |
| CW30173-751 | ASSY, 6.00 IN WEIGHT STACK PIN AND | 228 |
| CWLDNN038-200 | PIN, ROLL, DIA 3/8 X 2 | 250 |
| CW30184-901 | ASSY,BARREL, TOP PLATE,ALUMINUM | 251 |
| CW30391-721 | WELDMENT, WEIGHT, TOP, MTP-S, PF118 | 257 |
| CW10550-721 | PLATE, WEIGHT, MED TOP (MTP-S), 10 | 283 |
| CW10550-722 | PLATE, WEIGHT, MED TOP (MTP-S), 10 | 283 |
| CW30132-711 | SELECTOR STEM, 20 PLATE,0 .875 DIA, | 308 |
| CW30132-712 | SELECTOR STEM, 20 PLATE,0 .875 DIA, | 309 |
| CW30011-101 | LABEL,WARNING WEIGHT STACK | 311 |
| CWAC1185-101 | LABL,KEEP HND&FT CLR(CEMCO)3/8X6.75 | 312 |
| CW12401-106 | LABEL, WEIGHT PLATE, 20 LBS/ 8 KG | 319 |
| CW12401-110 | LABEL, WEIGHT PLATE, 30 LBS/ 13.6 K | 323 |
| CW12401-114 | LABEL, WEIGHT PLATE, 40 LBS/ 18.2 K | 327 |
| CW12401-118 | LABEL, WEIGHT PLATE, 50 LBS/ 22.7 K | 331 |
| CW12401-120 | LABEL, WEIGHT PLATE, 60 LBS/ 27.3 K | 333 |
| CW12401-122 | LABEL, WEIGHT PLATE, 70 LBS/ 31.8 K | 335 |
| CW12401-124 | LABEL, WEIGHT PLATE, 80 LBS/ 36.4 K | 337 |
| CW12401-126 | LABEL, WEIGHT PLATE, 90 LBS/ 40.9 K | 339 |
| CW12401-128 | LABEL, WEIGHT PLATE, 100 LBS/ 45.5 | 341 |
| CW12401-129 | LABEL, WEIGHT PLATE, 110 LBS/ 50 KG | 342 |
| CW12401-130 | LABEL, WEIGHT PLATE, 120 LBS/ 54.6 | 343 |
| CW12401-131 | LABEL, WEIGHT PLATE, 130 LBS/ 59.1 | 344 |
| CW12401-132 | LABEL, WEIGHT PLATE, 140 LBS/ 63.6 | 345 |
| CW12401-134 | LABEL, WEIGHT PLATE, 160 LBS/ 72.7 | 347 |
| CW12401-135 | LABEL, WEIGHT PLATE, 170 LBS/ 77.3 | 348 |
| CW12401-136 | LABEL, WEIGHT PLATE, 180 LBS/ 81.8 | 349 |

| | | |
|----------------|-------------------------------------|--------|
| CW12401-137 | LABEL, WEIGHT PLATE, 190 LBS/ 86.4 | 350 |
| CW12401-138 | LABEL, WEIGHT PLATE, 200 LBS/ 90.9 | 351 |
| CW12401-140 | LABEL, WEIGHT PLATE, 220 LBS/ 100 K | 353 |
| CW12401-142 | LABEL, WEIGHT PLATE, 240 LBS/ 109.1 | 355 |
| CW12401-144 | LABEL, WEIGHT PLATE, 260 LBS/ 118.2 | 357 |
| CW12401-145 | LABEL, WEIGHT PLATE, 280 LBS/ 127.3 | 358 |
| CW12537-109 | NUT,INSERT,THIN-NUT,LARGE FLANGE | 400 |
| CW30126-101 | LABEL,VINYL, PRECOR, 3.25 X 18.0 | 401 |
| CWKAYN031-025 | LOCKNUT, NYLON INSERT, HALF, UNC, | 402 |
| CWPF2308-721 | BAR, FLAT 3/16 X 1 X (26 3/8), 4 BE | 403 |
| CWPF3143-211 | SHROUD,SHEET,STEEL,3/32 THICK,4 BEN | 404.01 |
| CWPF3143-221 | SHROUD,SHEET,STEEL,3/32 THICK,4 BEN | 404.02 |
| CWPF3143-231 | SHROUD,SHEET,STEEL,3/32 THICK,4 BEN | 404.03 |
| CWPF3143-241 | SHROUD,SHEET,STEEL,3/32 THICK,4 BEN | 404.04 |
| CWPF3143-251 | SHROUD,SHEET,STEEL,3/32 THICK,4 BEN | 404.05 |
| CWPF3143-261 | SHROUD,SHEET,STEEL,3/32 THICK,4 BEN | 404.06 |
| CWPF3143-271 | SHROUD,SHEET,STEEL,3/32 THICK,4 BEN | 404.07 |
| CWPF3143-281 | SHROUD,SHEET,STEEL,3/32 THICK,4 BEN | 404.08 |
| CWPF3143-291 | SHROUD,SHEET,STEEL,3/32 THICK,4 BEN | 404.09 |
| CWPF3143-311 | SHROUD,SHEET,STEEL,3/32 THICK,4 BEN | 404.11 |
| CWPF3143-321 | SHROUD,SHEET,STEEL,3/32 THICK,4 BEN | 404.12 |
| CWPF3143-331 | SHROUD,SHEET,STEEL,3/32 THICK,4 BEN | 404.13 |
| CWPF3143-341 | SHROUD,SHEET,STEEL,3/32 THICK,4 BEN | 404.14 |
| CWPF3143-351 | SHROUD,SHEET,STEEL,3/32 THICK,4 BEN | 404.15 |
| CWPF3143-361 | SHROUD,SHEET,STEEL,3/32 THICK,4 BEN | 404.16 |
| CWPF3143-711 | SHROUD,SHEET,STEEL,3/32 THICK,4 BEN | 404.17 |
| CWPF3144-721 | SHROUD BRKT,PLATE,STEEL,1/8 THICK,1 | 405 |
| CWTAYN031-100 | SCREW, BUTTON HEAD, BLK XYLAN, 5/1 | 406 |
| CWWALYN031-008 | WASHER, SPLIT, 5/16 ID, BL | 407 |
| CWWBKN031-007 | WASHER, FLAT, TYPE A, SAE, 5/16 ID | 408 |
| CW12401-134 | LABEL, WEIGHT PLATE, 160 LBS/ 72.7 | 437 |
| CWAC1177-101 | FLOOR PROTECTOR, RUBBER, 4.563 X 4. | 501 |